

1) Status of the notification

Final

2) Issuer

Name AEDIFICA
Identification number 0877-248-501

3) Reason for the notification

Passive crossing of a threshold
Downward crossing of the lowest threshold

4) Notification by

A parent undertaking or a controlling person

5) Persons subject to the notification requirement

Name	Address (for legal entities)
The Goldman Sachs Group, Inc	Corporation Truse Center, 1209 Orange Street, Wilmington, DE 19801, USA

6) Persons that dispose of voting rights (only to be filled in if art. 7 of the Law applies)

Name	Address (for legal entities)

Please continue entering the information in **part II** concerning the persons referred to in Sections 5 and 6

Part II

7) Date on which the threshold is crossed

10/03/2026 (DD/MM/YYYY)

8) Threshold that is crossed (in %)

5

If the holding has fallen below the lowest threshold, you have the option of not entering any numbers in Section 10

9) Denominator

83,470,544


Please enter the denominator before filling in the data

10) Notified details

A) Voting rights	Previous notification	After the transaction			
	# of voting rights	# of voting rights		% of voting rights	
Holders of voting rights		Linked to securities	Not linked to the securities	Linked to securities	Not linked to the securities
The Goldman Sachs Group, Inc.	0	0		0.00%	
Goldman Sachs International	17,806	456,774		0.55%	
Goldman Sachs Asset Management, L.P.	600,091	781,813		0.94%	
Goldman Sachs Asset Management B.V.	136,385	224,992		0.27%	

Goldman Sachs & Co. LLC	0	222,136		0.27%	
The Goldman Sachs Trust Company of Delaware	0	3,398		0.00%	
Goldman Sachs Asset Management International	43,300	240,576		0.29%	
Subtotal	797,582	1,929,689		2.31%	
TOTAL		1,929,689	0	2.31%	0.00%



 Start with "groups" of holders. Add subtotals with Σ , and then finish with the persons who are "alone".
 For groups, start with the ultimate controlling natural person or legal entity.
 The totals, subtotals and % will be updated once you have clicked on **<CALCULATE>**.

B) Equivalent financial instruments	After the transaction						
	Holders of equivalent financial instruments	Type of financial instrument	Expiration date	Exercise period or date	# of voting rights that may be acquired if the instrument is exercised	% of voting rights	Settlement
Goldman Sachs International	Call Option	2026-09-04		128,000	0.15%	Physical	-
Goldman Sachs International	Call Option	2026-09-11		128,000	0.15%	Physical	-
Goldman Sachs International	Call Option	2026-09-18		128,000	0.15%	Physical	-
Goldman Sachs International	Call Option	2026-09-25		128,000	0.15%	Physical	-
Goldman Sachs International	Call Option	2026-10-02		128,000	0.15%	Physical	-
Goldman Sachs International	Call Option	2026-03-17		2,659	0.00%	Cash	-
Goldman Sachs International	Call Option	2026-04-01		916	0.00%	Cash	-
Goldman Sachs International	Call Option	2026-04-08		811	0.00%	Cash	-
Goldman Sachs International	Swap	2026-05-25		1,284	0.00%	Cash	-
Goldman Sachs International	Swap	2026-05-28		71	0.00%	Cash	-
Goldman Sachs International	Swap	2026-08-17		849	0.00%	Cash	-
Goldman Sachs International	Swap	2026-09-25		1,567	0.00%	Cash	-
Goldman Sachs International	Swap	2027-01-26		6	0.00%	Cash	-
Goldman Sachs International	Swap	2028-08-21		154	0.00%	Cash	-
Goldman Sachs International	Swap	2029-01-05		21,135	0.03%	Cash	-
Goldman Sachs International	Swap	2029-01-16		93,500	0.11%	Cash	-
Goldman Sachs International	Swap	2029-02-23		55,458	0.07%	Cash	-
Goldman Sachs International	Swap	2029-02-27		1,186	0.00%	Cash	-
Goldman Sachs International	Swap	2029-03-02		975	0.00%	Cash	-
Goldman Sachs International	Swap	2029-03-05		118	0.00%	Cash	-
Goldman Sachs International	Swap	2029-03-12		14	0.00%	Cash	-
Goldman Sachs International	Swap	2030-07-01		86	0.00%	Cash	-
Goldman Sachs International	Swap	2030-12-05		79,846	0.10%	Cash	-
Goldman Sachs International	Swap	2031-03-10		3,680	0.00%	Cash	-
Goldman Sachs International	Swap	2035-04-30		11,576	0.01%	Cash	-
Goldman Sachs International	Swap	2035-08-01		197,808	0.24%	Cash	-
Goldman Sachs International	Swap	2036-02-04		18,251	0.02%	Cash	-
Goldman Sachs International	Swap	2036-03-05		34,814	0.04%	Cash	-
Goldman Sachs International	Swap	2036-03-06		388,319	0.47%	Cash	-
Goldman Sachs International	Swap	2036-03-10		1,211	0.00%	Cash	-
Goldman Sachs International	Securities Lending	Open		459,869	0.55%	Physical	-
Goldman Sachs Bank Europe SE	Securities Lending	Open		8,651	0.01%	Physical	+
TOTAL				2,024,812	2.43%		

 **The totals** will be updated once you have clicked on <CALCULATE>

TOTAL (A & B)	# of voting rights	% of voting rights
	CALCULATE	3,954,501
		4.74%

11) Full chain of controlled undertakings through which the holding is effectively held, if applicable

Please refer to Annexure - Structured Chart

12) In case of proxy voting for only one GM

Holder		will cease to hold / will hold again	0	voting rights as of	(DD/MM/YYYY)
--------	--	---	---	---------------------	--------------

13) Additional information

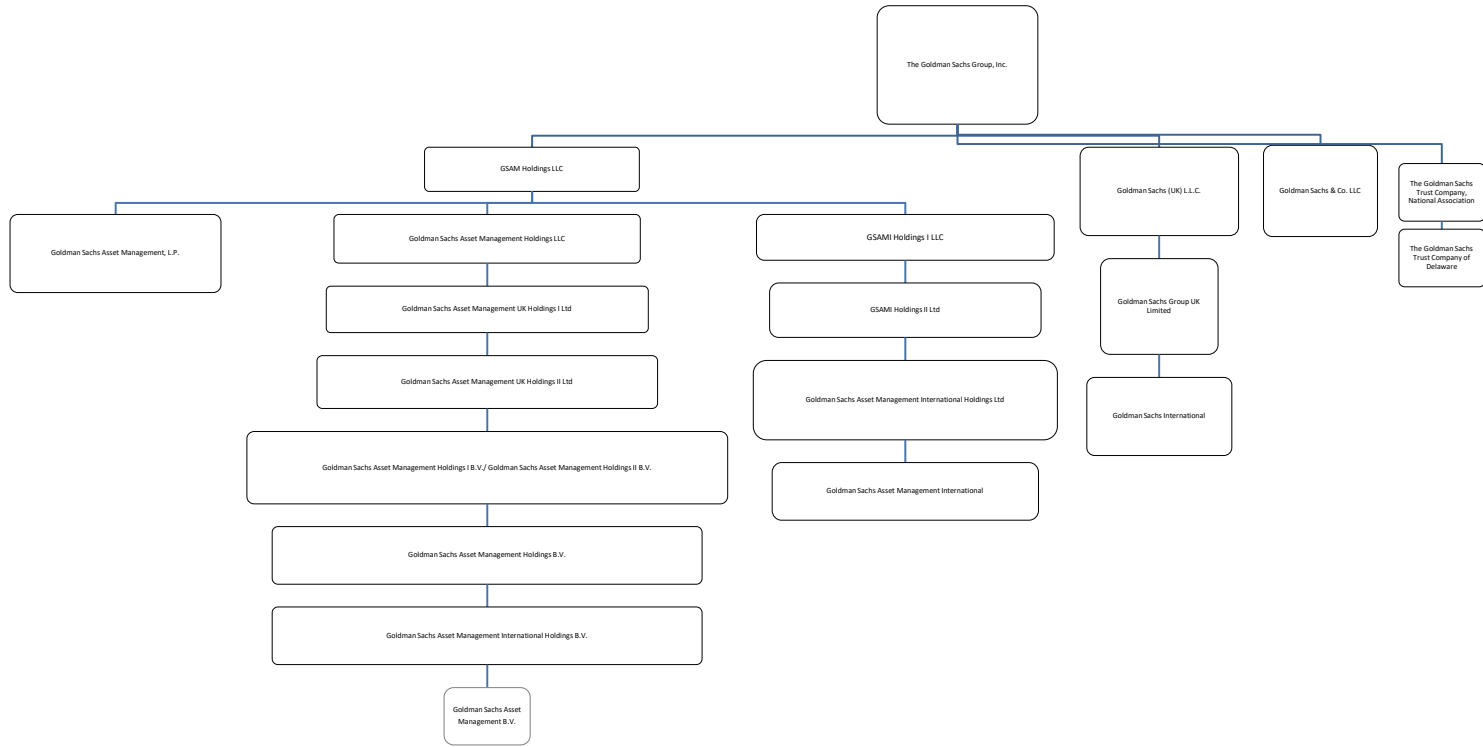
With reference to the items mentioned in Section 10B:
- "Call Warrants", "Put Option", "Swaps" and "Call Option" mentioned in rows 67 to 96 - these are held by the corresponding entities where Goldman Sachs has a long exposure

Done at	Warsaw
On	17/03/2026 (DD/MM/YYYY)
Name & capacity	Andrzej Szyszka, Executive Director

Signature	
-----------	---

For security reasons, the unsigned form in xlsx format should be transmitted to trp.fin@fsm.a.be. You can do this manually OR if you have MS Outlook at your disposal via the "Save & Send" button.

In addition, a signed copy in PDF format should also be transmitted.



Chain of Controlled Undertakings:

- GOLDMAN SACHS INTERNATIONAL IS CONTROLLED BY GOLDMAN SACHS GROUP UK LIMITED WHICH IS CONTROLLED BY GOLDMAN SACHS (UK) L.L.C. WHICH IS CONTROLLED BY THE GOLDMAN SACHS GROUP, INC.
- GOLDMAN SACHS ASSET MANAGEMENT, L.P. IS CONTROLLED BY GSAM HOLDINGS LLC WHICH IS CONTROLLED BY THE GOLDMAN SACHS GROUP, INC.
- GOLDMAN SACHS ASSET MANAGEMENT INTERNATIONAL IS CONTROLLED BY GOLDMAN SACHS ASSET MANAGEMENT INTERNATIONAL HOLDINGS LTD WHICH IS CONTROLLED BY GSAMI HOLDINGS II LTD. WHICH IS CONTROLLED BY GSAMI HOLDINGS I LLC WHICH IS CONTROLLED BY GSAM HOLDINGS LLC WHICH IS CONTROLLED BY THE GOLDMAN SACHS GROUP, INC.
- THE GOLDMAN SACHS TRUST COMPANY OF DELAWARE. IS CONTROLLED BY THE GOLDMAN SACHS TRUST COMPANY, NATIONAL ASSOCIATION WHICH IS CONTROLLED BY THE THE GOLDMAN SACHS GROUP, INC
- GOLDMAN SACHS & CO. LLC IS CONTROLLED BY THE GOLDMAN SACHS GROUP, INC.
- GOLDMAN SACHS ASSET MANAGEMENT B.V. IS CONTROLLED BY GOLDMAN SACHS ASSET MANAGEMENT INTERNATIONAL HOLDINGS B.V. IS CONTROLLED BY GOLDMAN SACHS ASSET MANAGEMENT HOLDINGS B.V. IS CONTROLLED BY GOLDMAN SACHS ASSET MANAGEMENT HOLDINGS I B.V / GOLDMAN SACHS ASSET MANAGEMENT HOLDINGS II B.V. WHICH IS CONTROLLED BY GOLDMAN SACHS ASSET MANAGEMENT UK HOLDINGS II LTD WHICH IS CONTROLLED BY GOLDMAN SACHS ASSET MANAGEMENT UK HOLDINGS I LTD WHICH IS CONTROLLED BY GOLDMAN SACHS ASSET MANAGEMENT HOLDINGS LLC WHICH IS CONTROLLED BY GSAM HOLDINGS LLC WHICH IS CONTROLLED BY THE GOLDMAN SACHS GROUP, INC.