

Bartra Healthcare

CEO – ANGELA RING





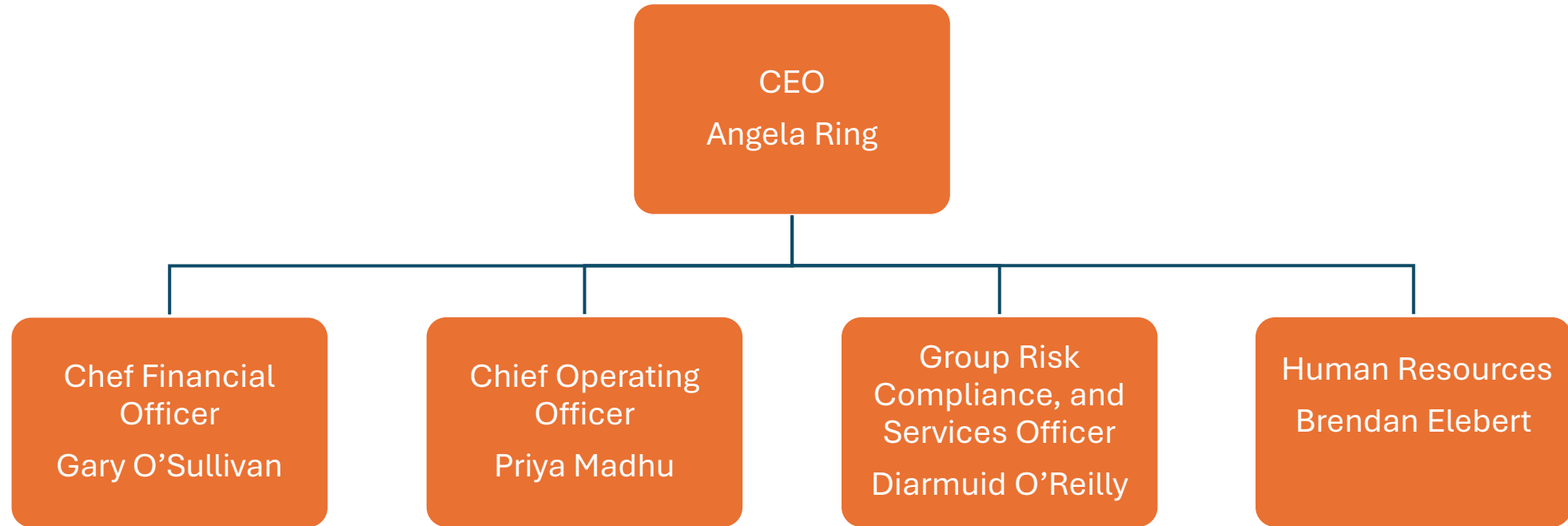
We develop, manage and invest with the purpose of improving places to deliver sustainable commercial & social benefit

**Ireland's Premier
Investment Specialists in
Healthcare & Beyond**

bartra.ie



Bartra Healthcare Senior Management Team



Irish Healthcare Landscape

- Recognition in Irish Healthcare Strategy (Slainte Care) of the requirement to move away from acute hospital care
- Ageing demographics
- To align with this, Bartra Healthcare seized the opportunity to provide transitional, step down care in 2020 = Beaumont Lodge



Beaumont Lodge Transitional Care Unit

**Bartra**
Healthcare





The Beaumont Lodge TCU Model

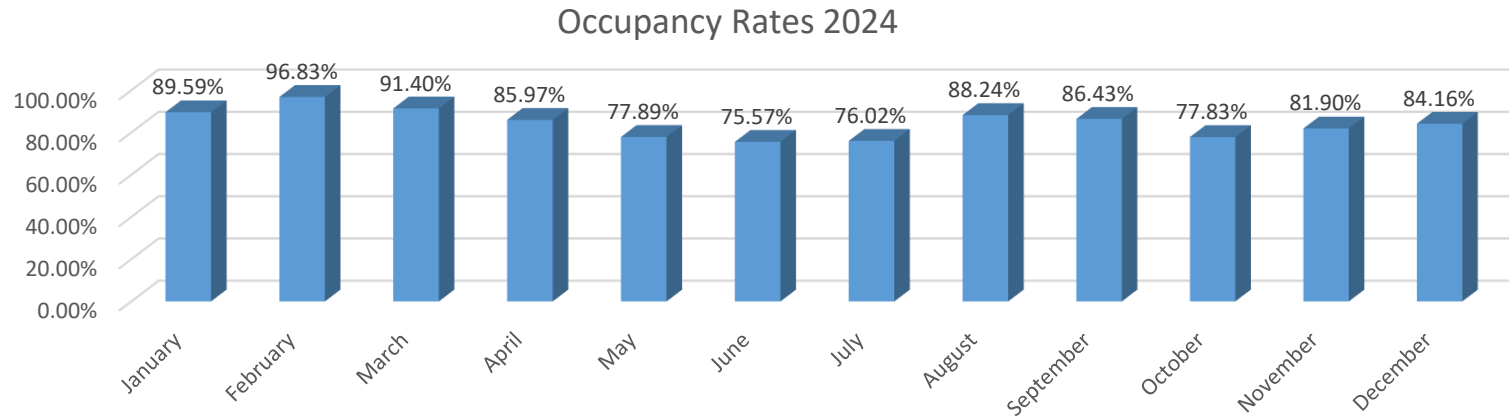
Where we started

- Nurse led care – MDT EPR
- Significant impact on Trolley GAR and acute bed days
- 365-day admissions
- Transport provided with HCA for OPDs and admissions
- Weekly and monthly KPI's for HSE

How we evolved

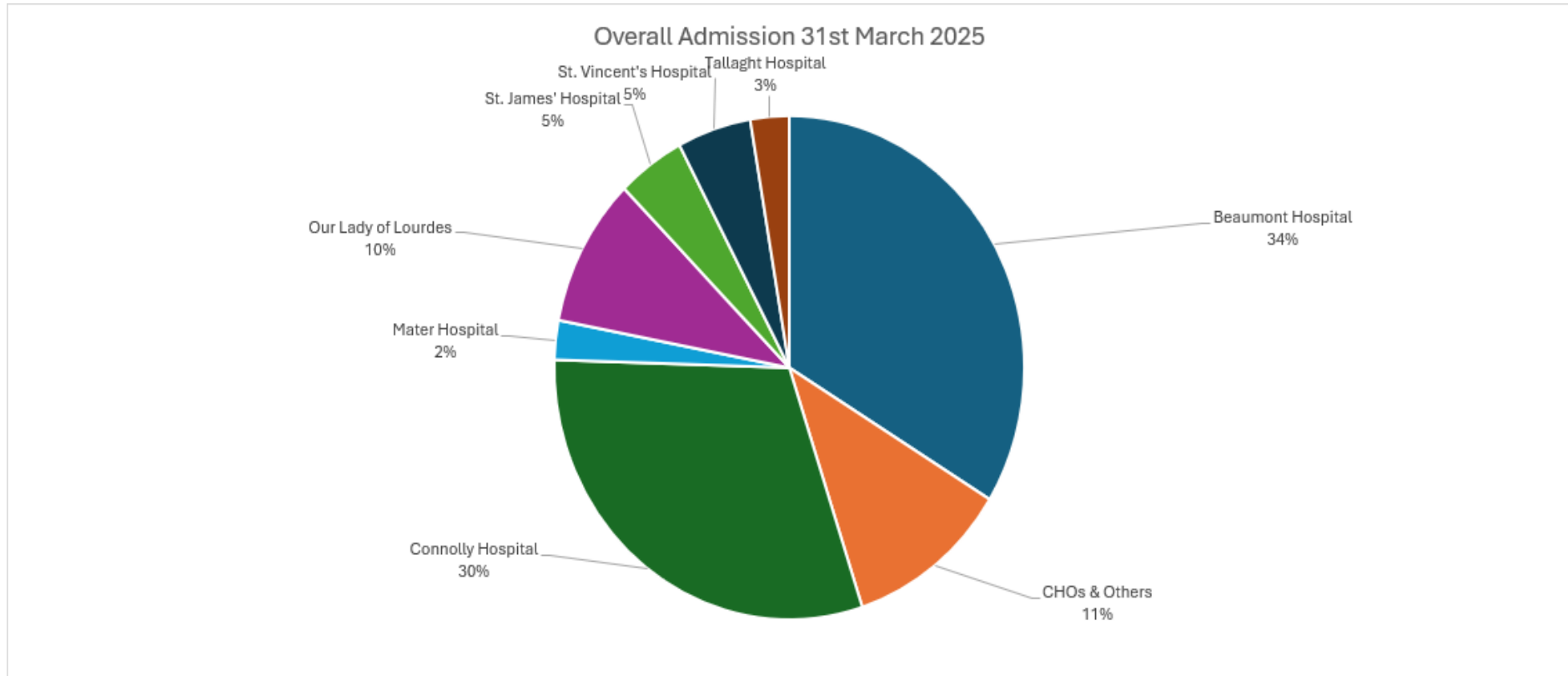
- Integration with Regional Health Authority
- Consultant led - Shared Clinical Governance with acute hospitals
- Team of health and social care professionals, including medical social workers, physiotherapists and occupational therapists
- Expanded role of Nursing to meet acute hospital needs

Occupancy Rates 2024 v 2025



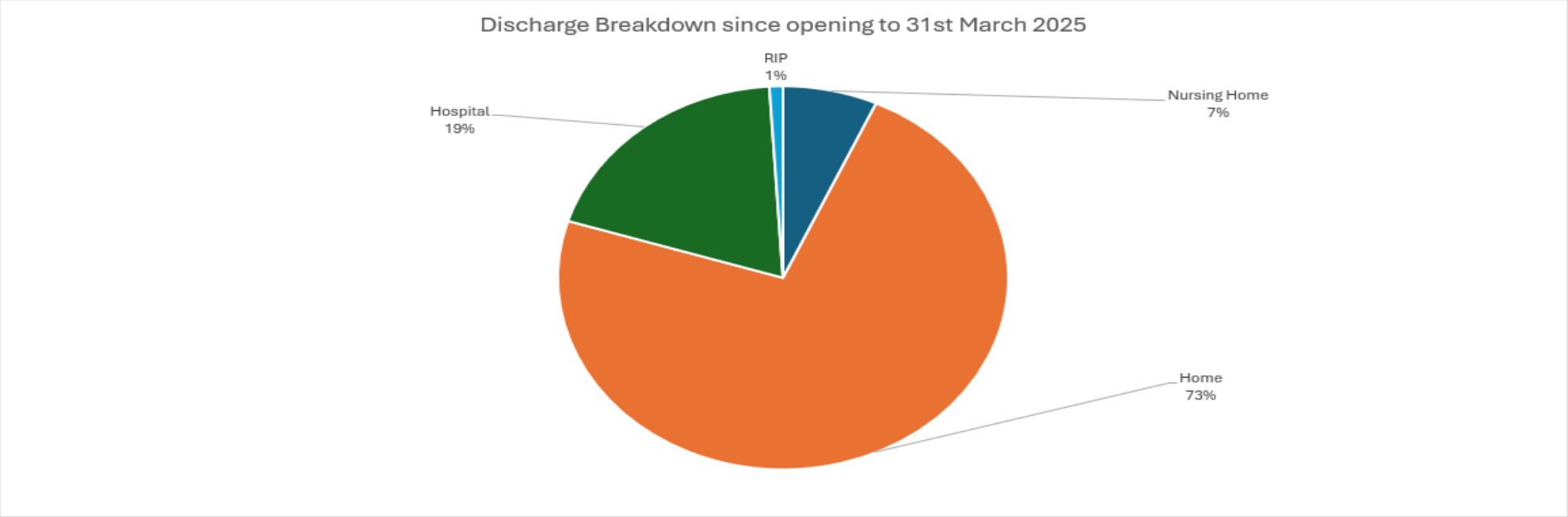
Admission Source

Total Admissions 5670 of which 11% were admitted at weekends and Public Holidays



Discharge Destination

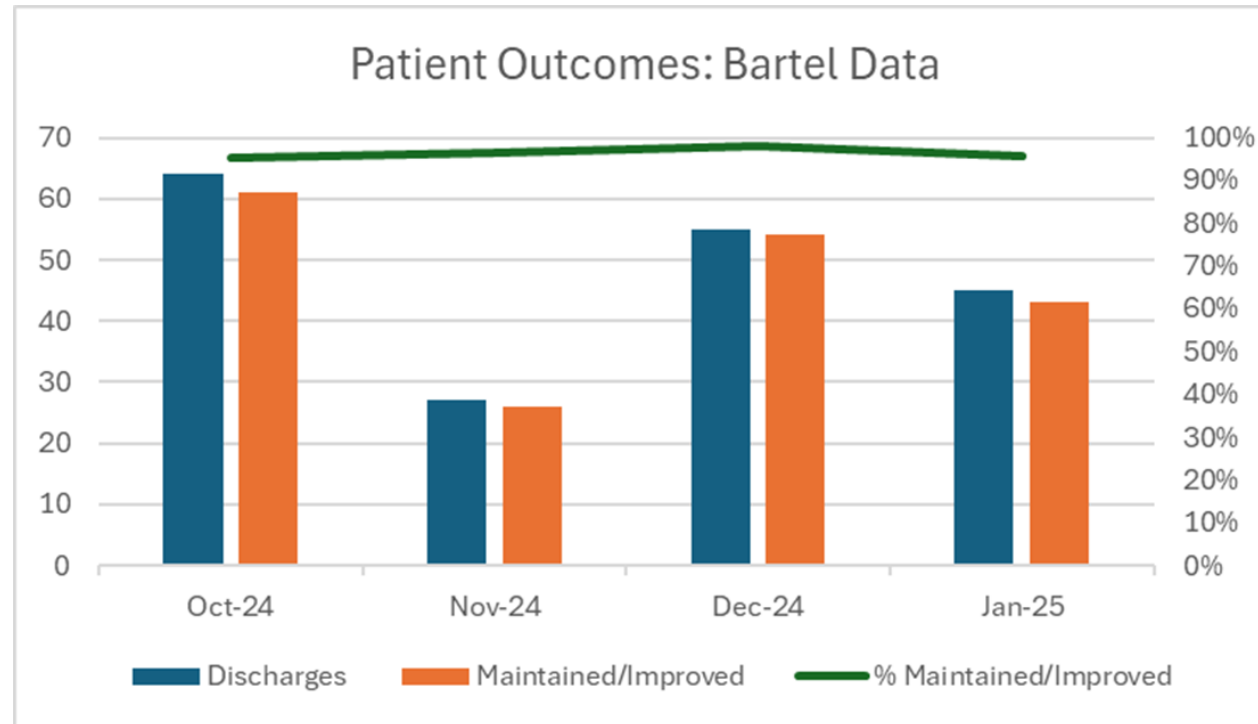
Total discharges 5463 -73% of Patients admitted to date have been discharged home



57 Patients initially admitted with the intention of being transferred for LTC were successfully discharged home.

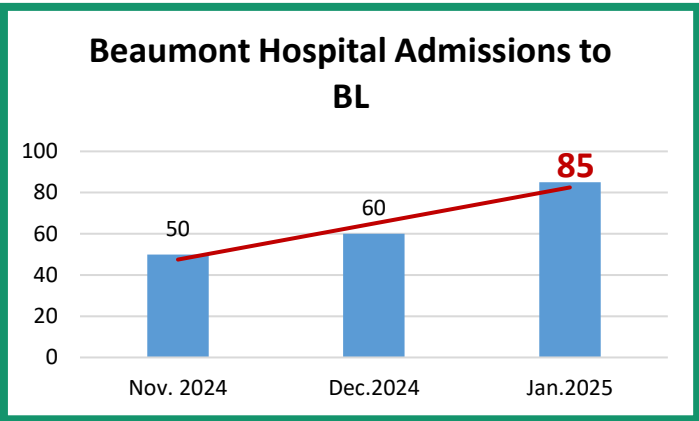
Patient Outcomes

96% of discharged patients improved or maintained their level of independence (Oct 24 - Feb 25)





Significant increase in admissions to BL trend



Positive impact of appointing HSE consultant as reflected on the January data

Beaumont Hospital Trolley GAR

IMPACT ON BEAUMONT HOSPITAL'S TROLLEY GAR		
Date	Trolley Gar	No. of patients admitted to BLTCU
08/01/2025	12	8
09/01/2025	0	3
16/01/2025	23	7
17/01/1900	7	7

- Beaumont Lodge Feb 2025

Benefits and Impact of Shared Clinical Governance Model

- **Benefits:**

- Reduced transfers to Emergency dept
- Admission of patients with higher acuity needs
- Shorter Length of stay
- Better patient outcomes
- Greater collaboration with the Regional Health Authority Group

- **Impact:**

- Requirement for additional Clinical, Medical and MDT Staff to meet the Hospitals needs and expectations
- Increased Cost of Care – but significantly lower than provision of Acute Care which is the only alternative at present

**Significant
increase in
admissions**

**Acute
Hospital
Trolley
numbers**

**Improved
Patients
Outcomes**

Patient Satisfaction Survey (Jan '25)

95% of patients made feel welcome

96% of patients felt they were treated with respect

87% felt involved in decisions about care and treatment

88% of patients of satisfied with quality and presentation of food and snacks

85% of patients satisfied with dining experience



Residential Care Homes

In 2025, the Irish Government allocated an additional €62m to the Fair Deal scheme – total of €1,223bn. This measure was an attempt to assist providers with increased operational and wage costs of care, including national min. wage (from €12.70-€13.50) and stat. sick pay

Bartra secured a significant increase and two year deal in April 2025

Occupancy

Mar 25

NW – 92%

LS – 97%

CL –99%

Relationships established with Aged Religious Orders









Challenges

- Regulatory Compliance
- Funding
- Recruitment and retention of staff

Sustained Growth

Raheen, Limerick



80-Bed Facility scheduled for completion in Q1 '26

Salthill, Galway



131-Bed Facility scheduled for completion in 2027